



MINERAL PROCESSING AND RECYCLING

KEY FEATURES AND TECHNICAL DATA





**WE
MAKE
RECYCLING
EASY.**





over 3000 employees

9 production plants and growing

Distribution to 80 countries worldwide on 6 continents

Our own Research and Development Centre

Own production for supply chain disruptions

Fast service and after-sales

PRONAR

Pronar is a company with over 30 years of production and sales experience and declared as one of the fastest developing companies in Central and Eastern Europe. We are a leader in the production of agricultural, recycling and municipal machinery, disc wheels (biggest manufacture in Europe, second biggest in the world), driving systems, gears and pneumatic and hydraulic components. All crucial components and whole machines are manufactured in-house in eight modern factories. Pronar employs over 3000 people, from which 170 are highly qualified engineers. They are supported by results of research conducted by own research and development center. An undoubted advantage of Pronar is its own airfield and a fleet of airplanes used for quick business communication and emergency service cases.

Pronar constantly invests in new factories and high-tech manufacturing equipment. Every year we implement new production techniques like very precise machining centers, welding robots, water jets, 3D laser cutters and welders. As a result, our customers can be sure that their machines were made with the utmost care and precision.

Products carrying Pronar logo can be found in over 80 countries around the world and on every continent - whole Europe, USA, Canada, Mexico, Chile, China, South Korea, Japan, Australia and many others. Customers appreciate their high quality, ease of use and service, as well as very good after-sales support. Every day we are driven by a passion to create innovative solutions that allow us to compete with the largest players in global markets.



PRONAR
MACHINERY

VIBRATING SCREENS AND CRUSHERS

Mobile scalpers and final screens, as well as jaw and impact crushers are mandatory machines in companies that do quarrying or recycle aggregate. The equipment that is able to move independently increases the usability of the installation by allowing it to work in different parts of it. What is more the possibility of easy transport gives the opportunity of hassle-free rental or work on projects in remote locations.

Vibrating screens and crushers by Pronar are equipment developed by engineers with many years of experience in designing big and heavy recycling machines. The enormous possibilities of the factory producing them and modern production technologies allow us to provide customers with a well-thought-out product designed for many years of operation, even in very difficult conditions.

KEY FEATURES & BENEFITS

- | using modern technologies for production
- | basing the structure on proven and well-tested solutions
- | designed with ease and safety of operation in mind
- | short set-up time





vibrating screen MPP 1238s

Pronar MPP 1238s scalping screen is a machine designed for first-stage screening. Two long decks enable precise separation of the material into three fractions. The speeds of each hydraulically driven element, adjustable via a touchscreen, and easy to change inclination of the screenbox allow for smooth and precise adjustment of operating parameters to a given type of material. The 3.6-liter engine with 136 HP is able to cope with even a heavy load without the need to use high revs. The vibrating box lifting system and the side tensioning of both the upper and lower deck ensure easy access and a short set-up time. Once at its destination, the operator needs no more than 10 minutes for the screen to start working.

KEY FEATURES & BENEFITS

- | throughput up to 350 t/h
- | maximum feed size up to 500 mm
- | easy assembly disassembly and screen tensioning system
- | intuitive touch screen operation
- | full control over all machine parameters
- | remote control as standard
- | hydraulic drive using a load sensing pump for lower fuel consumption
- | set up time in under 10 minutes
- | possibility to work in front of the crusher thanks to folding rear hopper wall
- | lift-up screenbox for easier set-up and service
- | possibility to work in a 3- or 2-way split

OPTIONS

- | apron feeder in the charging hopper
- | central lubrication
- | screen media depending on the customer's needs



TECHNICAL DATA

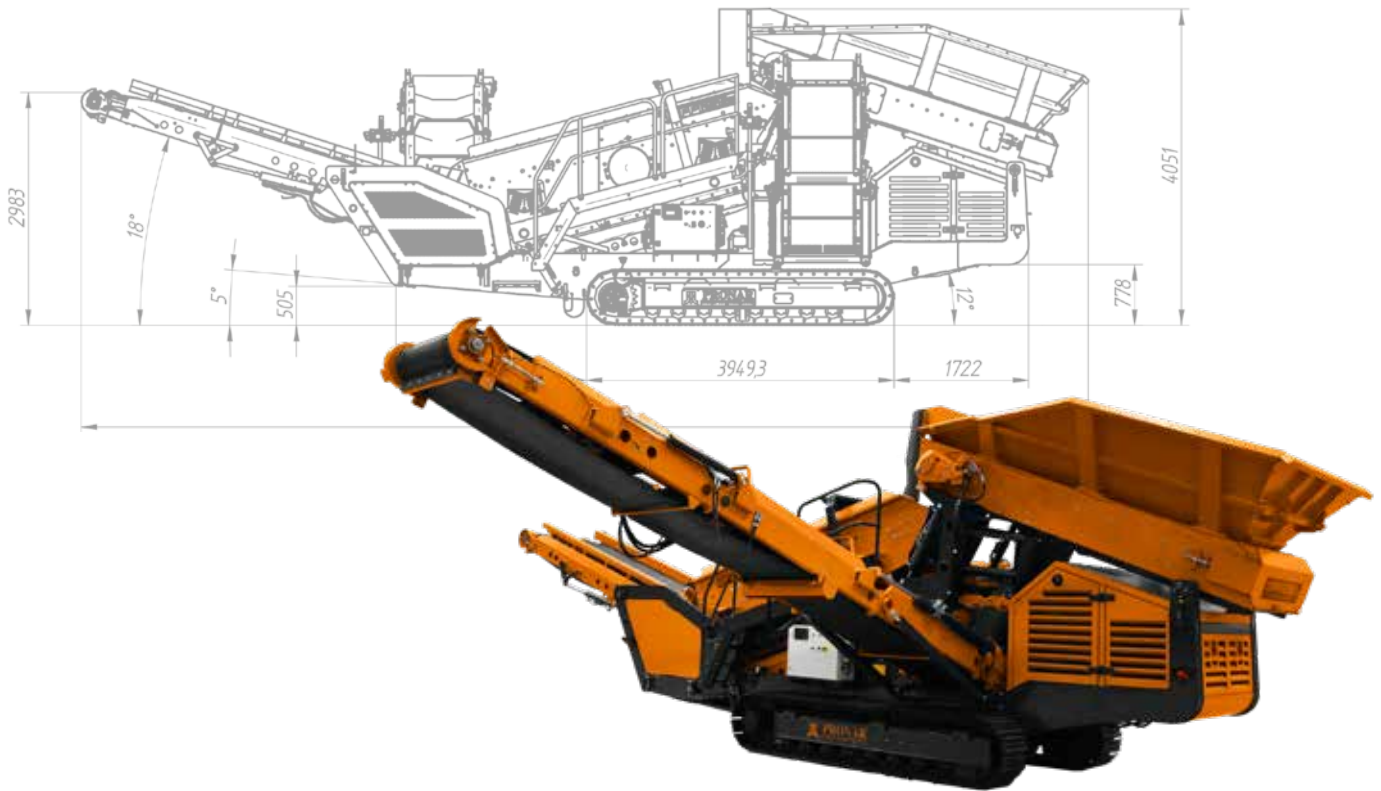
MPP 1238s

Dimensions (length/width/height) [mm]	12920/13640/12920
Transport dimensions (length/width/height) [mm]	12980/2550/3390
Weight [kg]*	~21000
Deck dimensions (length/width) [mm]	3800/1250
Performance up to (t/h)**	350
Oversize conveyor [mm]	1000
Mid-size conveyor [mm]	800
Fines conveyor [mm]	800
Engine	CAT 3.6, 100 kW, Stage V/Tier 4 Final

* Weight depends on the specification of the individual piece and may be higher

** Throughput performance depends on screened material

MPP 1238s





jaw crusher MJC 6510

The Pronar MJC 6510 jaw crusher is a machine designed for first stage crushing. The dimensions of the inlet to the crushing chamber are 1015x650. This allows to work with input material sizes of 500-600 mm without the risk of clogging and unnecessary downtime. Hydraulic adjustment of the gap between 30 and 120 mm allows for easy and quick adjustment of the machine to work with various materials. Big space between the chamber and the main feeder ensures a smooth flow of material without the risk of clogging. The fine fraction pre-screening system improves the crushing quality and extends the life of the linings. The possibility of setting many operating parameters using a wireless remote control increases not only the comfort of work, but also the operator's safety.

KEY FEATURES & BENEFITS

- | hydraulic gap adjustment
- | reversing system
- | extensive remote control
- | key components driven by load sensing pumps
- | pre-screening system
- | short set-up time

OPTIONS

- | magnetic separator
- | recycling plate
- | central lubrication
- | sprinkler system
- | main and side conveyor with increased discharge height (by +0.6 m and +0.8 m respectively)
- | hydraulic oil heater



TECHNICAL DATA

MJC 6510

Crusher type	jaw crusher
Dimensions (length/width/height) [mm]	12900x2550x3230
Weight [kg]	~33000
CRUSHING	
Inlet (width/length) [mm]	1015x650
Gap adjustment	hydraulic
CSS (min-max) [mm]	30-120
Feed size (up to) [mm]	600
CONVEYORS	
Main conveyor width [mm]	1000
Main conveyor discharge height [mm]	3200
Side conveyor width [mm]	650
Side conveyor discharge height [mm]	2100
DRIVE	
Engine	CAT
Displacement	7.1

MJC 6510





pronar-recycling.com

PRONAR
PRONAR.pl

MPT18g

PRONAR
PRONAR.pl

0

MOBILE STOCKPILERS

Belt conveyors are machines that allow you to make a high pile of material quickly or help transport the material between two places. Their use in the yard means savings in operational costs and increases the level of safety. Compared to a loader used to form piles, they burn less fuel, require no operator for continuous operation, and inspections are much simpler and cheaper.

Mobile stockpilers from the Pronar MPT series give the customer wide choice when it comes to size and guarantee of solid construction. Depending on the model, the maximum capacity is up to 600 t/h. This allows to work with highly efficient screens or crushers, as well as even direct loading.

KEY FEATURES

- | reducing the cost of making piles
- | increasing the level of safety in the yard
- | low fuel consumption
- | low operating costs
- | possibility to build larger piles faster than with a loader





mobile stockpilers MPT 18g | MPT 24g



Belt conveyors MPT 18g and MPT 24g from the Heavy Duty series are machines for customers looking for solutions with above-average durability and high efficiency. Thanks to the well-thought-out design and the use of a 2.8 CAT engine (55 kW at 2500 rpm), it is possible to move up to 600 tons of material per hour. The radio control of the machine is already available as standard, and it can be optionally equipped with direct hopper that allows to work with the front loader. The undoubted advantage of Pronar conveyors is their easy transport. The possibility of transporting it in a 40 'HQ sea container significantly improves the machine reaching the other end of the world.

KEY FEATURES & BENEFITS

- | durable construction
- | possibility of loading with a front loader
- | a direct feeding hopper with a volume of up to 12 m³
- | efficient drive
- | easy transport
- | wireless remote control as standard



TECHNICAL DATA	MPT 18g	MPT 24g
Conveyor length (total construction length) [m]	19,3	23,4
Throughput max [t/h]	500	600
Discharge height [m]	8,7	11,3
Tilt angle max	25,2	27,2
Belt width [mm]	1000	1000
Weight [kg]	13800	15600
Dimensions (length/width/height) [mm]	11860/2250/2557	11910/2250/2550
Engine	CAT 2.8l, 55,4 kW (75 HP), Stage V/Tier 4 Final	CAT 2.8l, 55,4 kW (75 HP), Stage V/Tier 4 Final

MPT 18g



MPT 24g





mobile stockpiler **MPT 30/1g**

The Pronar MPT 30/1g mobile belt conveyor is the largest conveyor model in the offer. It allows you to build a 13 m high pile. 30 meters of belt length and a capacity of up to 500 t/h make the machine perfect for even large installations where the mobility of the equipment is important. The undoubted advantage of Pronar MPT 30/1g is the possibility of folding it to dimensions that allow sea transport in a 40'HQ container.

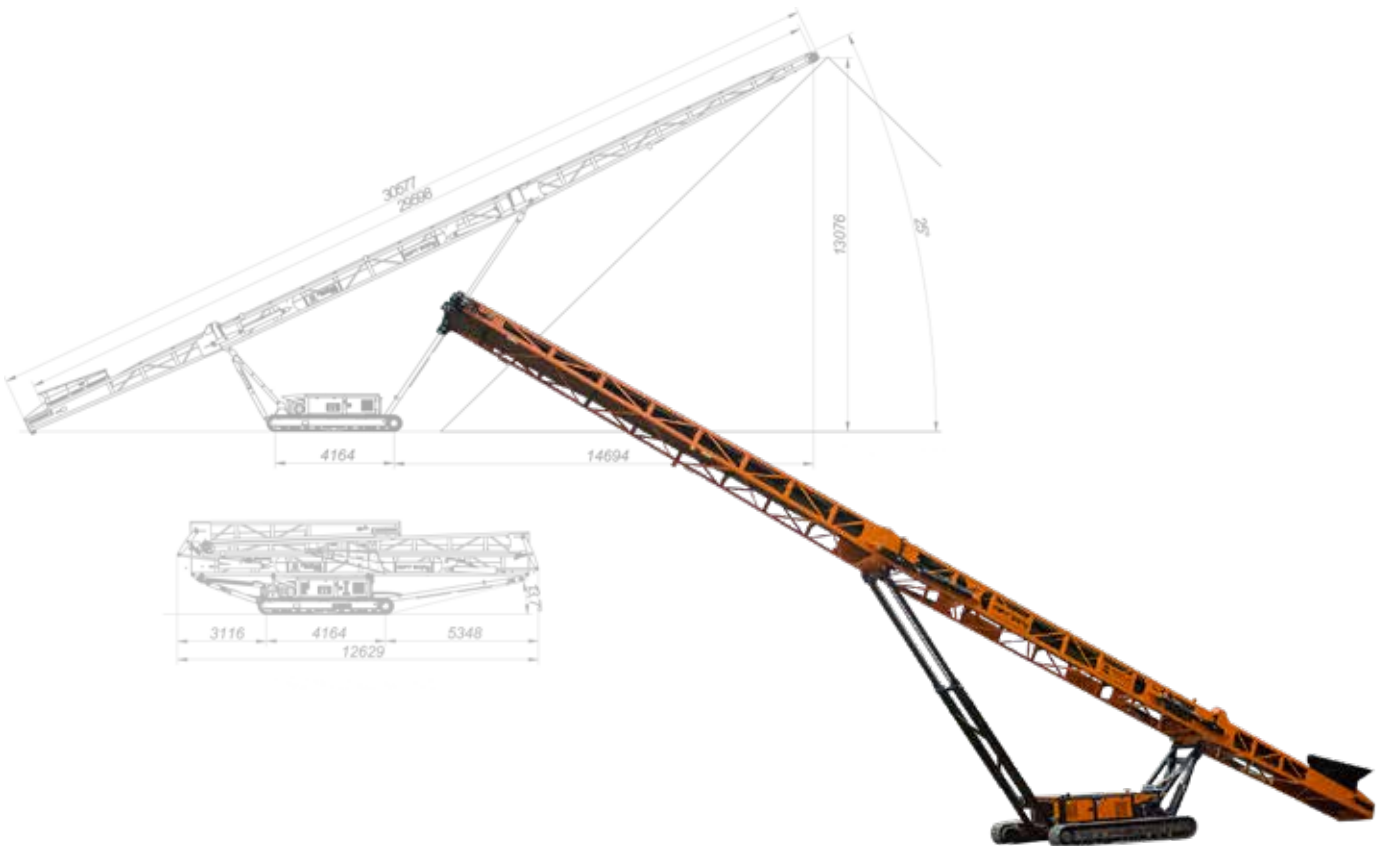
KEY FEATURES & BENEFITS

- | piling 13 m high prisms
- | performance level matched to the most common sizes of screens and crushers
- | efficient engine
- | possibility of transport in a 40 ,HQ sea container
- | possibility to install extensions on the charging hopper



TECHNICAL DATA**MPT 30/1g**

Conveyor length (total construction length) [m]	30,6
Throughput max [t/h]	500
Discharge height [m]	13
Tilt angle max	25
Belt width [mm]	1000 (1050)
Weight [kg]	15750
Dimensions (length/width/height) [mm]	12629/2950/3261
Engine	CAT 2.8l, 55,4 kW (75 HP), Stage V/Tier 4 Final, Dual power

MPT 30/1g



mobile stockpilers

MPT 24/1g | MPT 18/1g | MPT 15g

Belt conveyors MPT 15g, MPT 18/1g, MPT 24/1g are machines designed with low operating costs, lower weight and compact dimensions in mind. The capacity of 400 t/h allows you to transport quickly the material over long distances and to pile a pile with a maximum height of 7.4 m, 8.7 m, 10.6 m, respectively. The use of a 1.7 l and 36 kW CAT engine guarantees low fuel consumption and easy access service all around the world. All MPTs in this series are equipped with a Stage V compliant drive and fit in a 40' HQ sea container without disassembly.

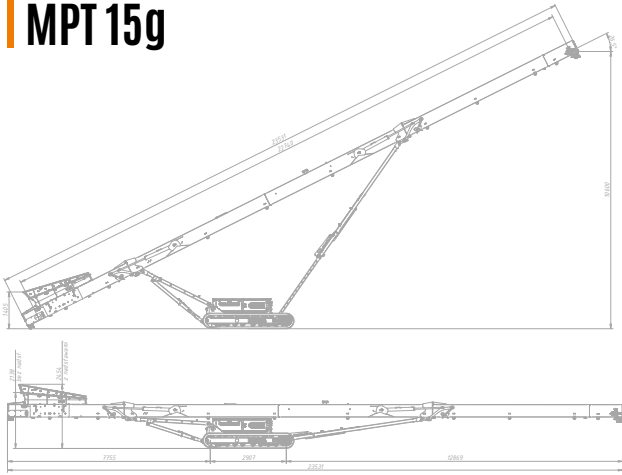
KEY FEATURES & BENEFITS

- | Making piles over 10 m high
- | Designed to work in line with crusher or a screener
- | Engine with low fuel consumption
- | Possibility of transport in a 40' HQ sea container
- | Possibility to install extensions on the charging hopper

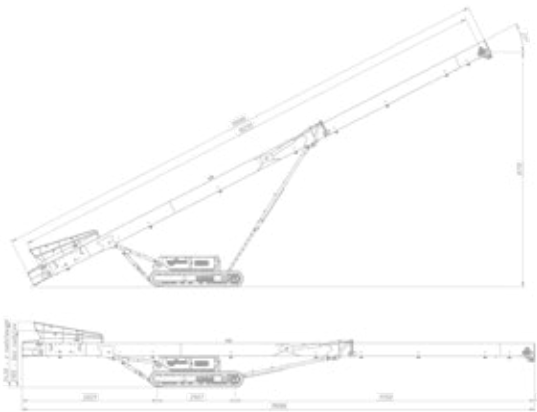


TECHNICAL DATA	MPT 15g	MPT 18/1g	MPT 24/1g
Conveyor length (total construction length) [m]	16,3	19	23,5
Throughput max [t/h]	400	400	400
Discharge height [m]	7,4	8,7	10,6
Tilt angle max	27	27	26,5
Belt width [mm]	900	900	900
Weight [kg]	9100	9720	11700
Dimensions (length/width/height) [mm]	11857/2259/2411	11857/2249/2441	11885/2249/3162
Engine	CAT 1.7i, 36 kW (47 HP), Stage V/Tier 4 Final	CAT 1.7i, 36 kW (47 HP), Stage V/Tier 4 Final	CAT 1.7i, 36 kW (47 HP), Stage V/Tier 4 Final

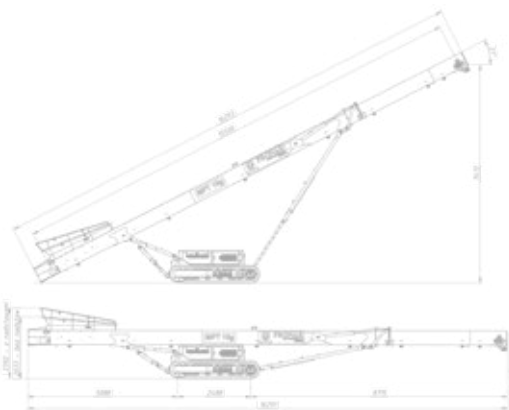
MPT 15g



MPT 18/1g



MPT 24/1g







**PRONAR-
RECYCLING
.COM**



**WE
MAKE
RECYCLING
EASY.**

PRONAR Sp. z o.o.

 **ul. Mickiewicza 101A | 17-210 Narew | Poland**

 **+48 85 682 71 00**

**PRONAR-
RECYCLING
.COM**

We constantly improve our machines. That is why we reserve the right to make changes to this publication without prior notice. All performance figures and technical data in this brochure are for illustration purposes only and may not be subject to any claims. This publication is not a binding offer.